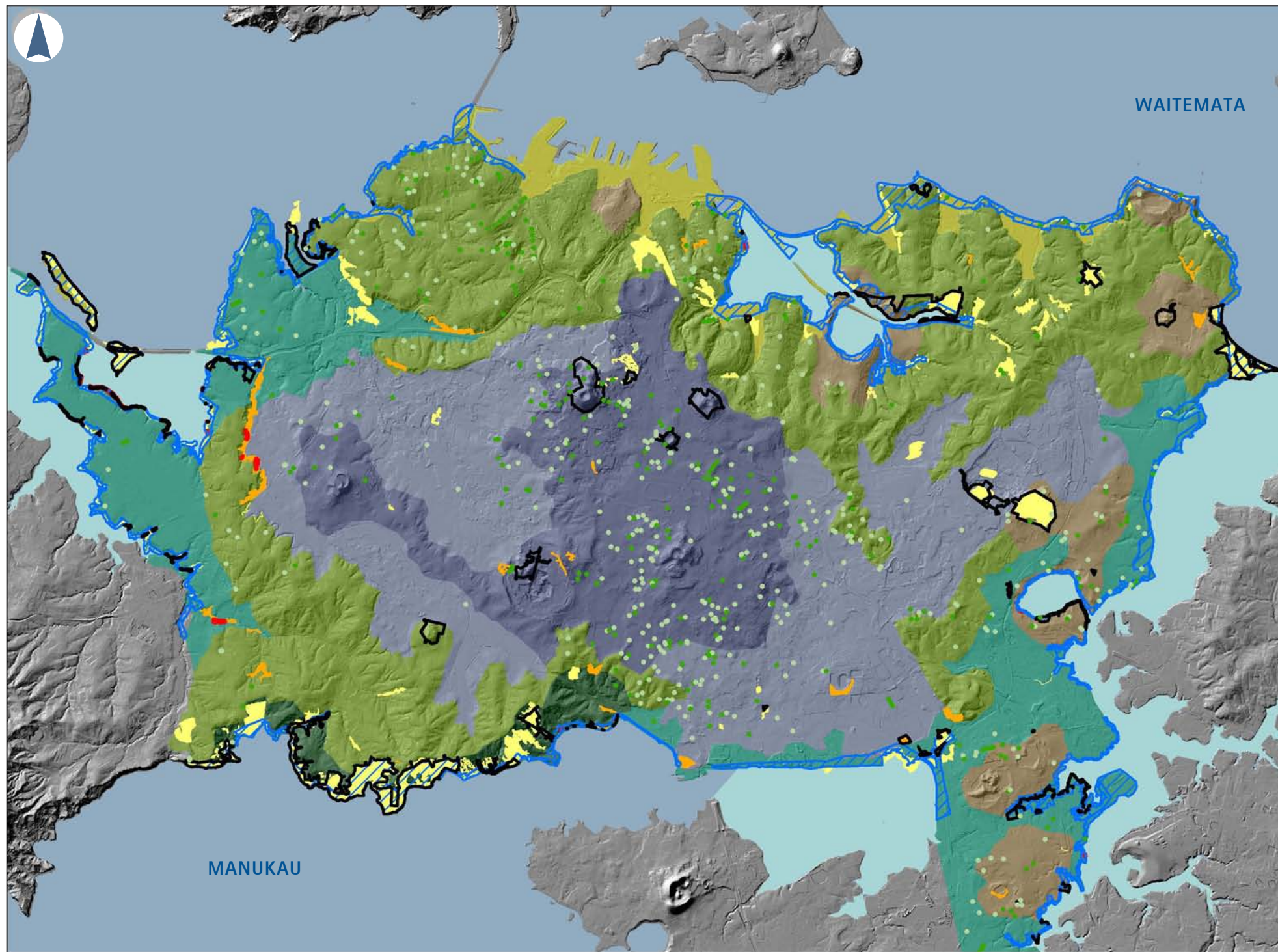


The underlying ecological patterns of the Auckland Isthmus are articulated in this mapping of representative 'Ecozones' to provide a framework for future enhancement and restoration of biodiversity values.

Disclaimer: These plans have been produced as a result of information provided by the client and/or sourced by or provided to Boffa Miskell Limited by a third party for the purposes of providing the services. No responsibility is taken by Boffa Miskell Limited for any liability or action arising from any incomplete or inaccurate information provided to Boffa Miskell Limited (whether from the client or a third party). These plans are provided to the client for the purpose for which it is intended.



Legend

Ecozones

- Interior volcanic plateau
- Subterranean basalt fields
- Elevated coastal ridges
- Coastal estuarine terraces
- Volcanic tuff ring
- Manukau harbour cliffs
- Waitemata waterfront harbour flats
- Sheltered estuarine inlet

Isthmus District Plan: ecological features

- Scheduled tree
- Scheduled groups of trees (two or more)
- Open space (Zone 1: conservation)
- Ecological Sites of Significance (PC88)
- Other identified ecological sites
- Coastal management areas
- Esplanade reserves

WAITEMATA WATERSIDE FLATS

Total Area / Ha: 470
Physical Attributes
 Marine estuarine mudflats and mangrove forest.
Remnant Habitat Types
 Coastal flaxland, shrubland, mangrove and saltmarsh
Ecological Values
 Nationally significant for wildlife as part of West Harbour Marine Reserve
Total Protected Sites: 16.4%
 Open Space Zone (Conservation): 40.2ha
 Plan Change 88 Sites: 37.1ha
 Additional 2008 Review Sites: 0
Representative Sites
 Pollen Island, West Harbour

VOLCANIC TUFF RING

Total Area / Ha: 1062
Physical Attributes
 Volcanic tuff deposits surrounding elevated volcanic features.
Remnant Habitat Types
 Mature and regenerating volcanic forest assemblages
Ecological Values
 Unique vegetation types and associated habitat values for wildlife
Total Protected Sites: 9.1%
 Open Space Zone (Conservation): 58.2ha
 Plan Change 88 Sites: 96.4ha
 Additional 2008 Review Sites: 4.7ha
Representative Sites
 Keppa Rd and St. Josephs School, Mission Bay

INTERIOR VOLCANIC PLATEAU

Total Area / Ha: 2299
Physical Attributes
 Elevated volcanic substrates and features including scoria cones and basaltic lava flows.
Remnant Habitat Types
 Scoria cone and lava flow forests
Ecological Values
 Unique vegetation communities and wildlife associations.
Total Protected Sites: 3.0%
 Open Space Zone (Conservation): 56ha
 Plan Change 88 Sites: 4.3ha
 Additional 2008 Review Sites: 4.3ha
Representative Sites
 Withell Thomas Reserve and Government House, Mt Eden

SUBTERRANEAN BASALT FIELDS

Total Area / Ha: 3498
Physical Attributes
 Low-lying volcanic basaltic substrates lying over ground water aquifers.
Remnant Habitat Types
 Aquifer-fed volcanic wetlands and volcanic forest remnants
Ecological Values
 Volcanic wetlands are an especially rare ecosystem type.
Total Protected Sites: 1.5%
 Open Space Zone (Conservation): 19.7ha
 Plan Change 88 Sites: 19.9ha
 Additional 2008 Review Sites: 12.5ha
Representative Sites
 Captain Springs, North and South, Penrose

MANUKAU HARBOUR CLIFFS

Total Area / Ha: 462
Physical Attributes
 Steep south-facing sedimentary cliffs.
Remnant Habitat Types
 Regenerating and mature coastal edge forest.
Ecological Values
 Continuous coastal corridor for wildlife.
Total Protected Sites: 61.0%
 Open Space Zone (Conservation): 111.3ha
 Plan Change 88 Sites: 165.8ha
 Additional 2008 Review Sites: 5.1ha
Representative Sites
 Waikowhai Bay Forest, Blockhouse Bay

COASTAL ESTUARINE TERRACES

Total Area / Ha: 2499
Physical Attributes
 Soft sand/clay terraces, with exposed coastal cliff faces.
Remnant Habitat Types
 Fringe coastal edge forest
Ecological Values
 Continuous coastal corridor for wildlife.
Total Protected Sites: 5.2%
 Open Space Zone (Conservation): 32.1ha
 Plan Change 88 Sites: 86ha
 Additional 2008 Review Sites: 12.1ha
Representative Sites
 Coyle Park, Point Chevalier

SHELTERED ESTUARINE INLET

Total Area / Ha: 2577
Physical Attributes
 Coastal estuarine mudflats and wetlands
Remnant Habitat Types
 Fresh, brackish and marine wetlands grading to young coastal forest.
Ecological Values
 Provides habitat for a diversity of marine fauna, including wading and roosting birds.
Total Protected Sites: 1.6%
 Open Space Zone (Conservation): 5.8ha
 Plan Change 88 Sites: 36.2ha
 Additional 2008 Review Sites: 0ha
Representative Sites
 Tahuna Torea, Glendowie

ELEVATED COASTAL RIDGES

Total Area / Ha: 5194
Physical Attributes
 Prominent elevated sandstone/ siltstone ridgelines with descending spur and gully faces.
Remnant Habitat Types
 Regenerating broadleaf forest within interior and coastal gullies
Ecological Values
 Riparian corridors networks.
Total Protected Sites: 4.0%
 Open Space Zone (Conservation): 52.5ha
 Plan Change 88 Sites: 122.9ha
 Additional 2008 Review Sites: 33.5ha
Representative Sites
 Dingle Dell and Selwyn Bush, St. Helliers

HERITAGE THEME: Ecozones – Representative Indigenous Ecosystems
 Supporting the Quality Natural Environment

Date Drawn: 06.10.08

Scale: 1:80,000 @A3

File Path: A08188_001_Heritage_GISmapping.indd

